

Back in black

nomenclature

tom 1

tom 2

caisse claire

tom 3

grosse caisse



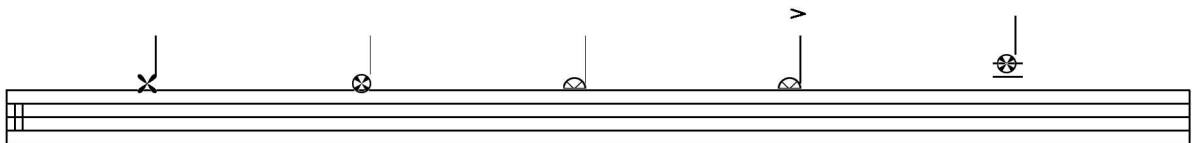
charleston

charleston
ouvert

charleston
semi-ouvert

charleston
semi-ouvert
acentué

cymbale
crash



let there be rock

♩ = 183

AC/DC

x 10

1:2

3

1 2 3

4

First musical staff with a treble clef, a key signature of one flat, and a 4/4 time signature. It contains a sequence of eighth notes with stems pointing down, followed by a double bar line with a repeat sign, and then continues with eighth notes and a quarter note.

Second musical staff with a treble clef, a key signature of one flat, and a 4/4 time signature. It contains eighth notes with stems pointing down, followed by quarter notes with stems pointing down, and then quarter notes with stems pointing up.

Third musical staff with a treble clef, a key signature of one flat, and a 4/4 time signature. It starts with a measure containing the number '3' and a quarter rest. This is followed by a measure with a quarter note and a quarter rest, then a measure with a quarter note and a quarter rest, and finally a sequence of eighth notes with stems pointing down.

Fourth musical staff with a treble clef, a key signature of one flat, and a 4/4 time signature. It consists of six measures, each containing a double bar line with a repeat sign. The sixth measure ends with a double bar line and a repeat sign. The number 'x 6' is written to the right of the staff.

Fifth musical staff with a treble clef, a key signature of one flat, and a 4/4 time signature. It starts with three measures of a double bar line with a repeat sign. This is followed by a sequence of eighth notes with stems pointing down, then a quarter note with a stem pointing down, and finally a sequence of eighth notes with stems pointing down.

Sixth musical staff with a treble clef, a key signature of one flat, and a 4/4 time signature. It consists of four measures, each containing a double bar line with a repeat sign. The fourth measure ends with a double bar line and a repeat sign. The number '1 2 3 4' is written above the fourth measure.

Seventh musical staff with a treble clef, a key signature of one flat, and a 4/4 time signature. It starts with a measure containing the number '5.' and a quarter rest, followed by a sequence of eighth notes with stems pointing down, then a quarter note with a stem pointing down, and finally a sequence of eighth notes with stems pointing down.

Eighth musical staff with a treble clef, a key signature of one flat, and a 4/4 time signature. It consists of six measures, each containing a double bar line with a repeat sign. The sixth measure ends with a double bar line and a repeat sign. The number 'x 8' is written above the staff.

Ninth musical staff with a treble clef, a key signature of one flat, and a 4/4 time signature. It contains quarter notes with stems pointing down, followed by quarter notes with stems pointing up, and then quarter notes with stems pointing down.